

KPA Membership

The Kennett Pike Association, Inc. has a "rolling" membership; members join for one year periodically throughout the year and renew in approximately the month they originally joined. The Kennett Pike Association, Inc. currently has about 250 paid members.

In 2004, the KPA received \$26,700.00 in membership dues and contributions. Over twenty members contributed more than \$100 each and the largest contribution was \$500. Contributions of \$9,400 were received specifically for landscaping.

Although there are thirty-eight organized Civic Associations in our membership area, only eight are currently members of the KPA. We urge more Civic Associations to join the KPA and support our goals of planning, preservation, beautification, and organized growth.

We are two-thirds the way through our membership renewal process for 2005 and

urge all those who have supported us in the past to renew their membership for 2005. We urge you to contact us about local issues or ways in which you might help us achieve our goals.

We thank the thirty-five Corporations, Civic Associations, and Non-Profit organizations who are members and are listed below.

- Buck Kennett Associates
Buck Road Civic Association
Buck Simperts Architect + Associates
Carl Doubet Jewelers
Centennial Homeowners Association
Christ Church Christiana Hundred
Dental Associates of Delaware
Diocese of Delaware-Oberod
EBD Management
Fair Hill Civic Association
Friess Associates of Delaware, LLC
Garden Club of Wilmington
Greenville BP Station
Greenville Real Estate
Hagley Museum and Library
Halsey Drive Service Corporation
Janssen's Super Market
Maintenance Corp. of Westover Hills, Sec. A

- McBride, Shopa and Company
Master Sidlow & Associates, P.A.
Morgan Stanley
Peninsula United Methodist Homes, Inc.
H. H. Quillen & Company
Service Corp. of Westover Hills, Sec. C
St. Joseph on the Brandywine Church
Stoltz Management of Delaware, Inc.
Stonegates
Tower Hill School
Wachovia Securities
Philip B. Weymouth, Jr. Insurance
West Farm Civic Association
Westover Hills-Woods, Inc.
Wilmington Country Club
Wilmington Trust Company
Winterthur

Membership dues and contributions are the major source of funding for the KPA. Over \$100,000 has been spent on landscaping and maintaining landscaping in the past four years. We again thank all our members for making this possible; we and the Community at large certainly benefit from their efforts. ■

Landscaping Along the Pike

Landscaping Committee. One of the most active Kennett Pike Association Committees is the Landscape Committee. Chaired by Joanne Bahr, this committee's members include Patricia Bussard, Patricia Hobbs, Eleanor Maroney, Beverley Rowland, and Gail Van Gilder. In 2004, the KPA spent about \$22,000 on landscaping and maintenance in DelDOT rights-of way. So far this year, expenditures for this purpose exceed \$15,000. The KPA's commitment to landscaping made it a strong supporter in achieving The Kennett Pike's inclusion in Delaware's first National Scenic Byway, as reported in greater detail below

Elms and Maples. The Association replaced the American Elm removed last year on the corner

of Kennett Pike and Buck Road with two 15 foot, disease resistant hybrid American Elms. The generous donations of two KPA Trustees, Glen Barnhill and Hamilton Fish, to our 501-C-3 affiliate Evergreen Plan enabled us to have the Delaware Center for Horticulture plant these beautiful trees. This fall, an Armstrong Maple donated by Trustee Patricia Hobbs will be planted in the small median between Janssens and Stonegates. Two more Armstrong Maples have been funded and will be planted in the medians adjacent to the Greenville Post Office.

Median Plantings. The narrow medians in Greenville offer a particular challenge. Their configuration limits landscape choices. The

plant material may not spread over the roadway, must be drought tolerant, and needs to be attractive most of the year. Earlier plantings were unsuccessful, so in 2004 the Association installed Panicum virgatum 'Shenandoah' in the medians across from the Greenville BP Amoco gas station and along Buck Road. These grasses, already part of the original landscaping elsewhere on the Pike, have done well even during the recent dry spell.

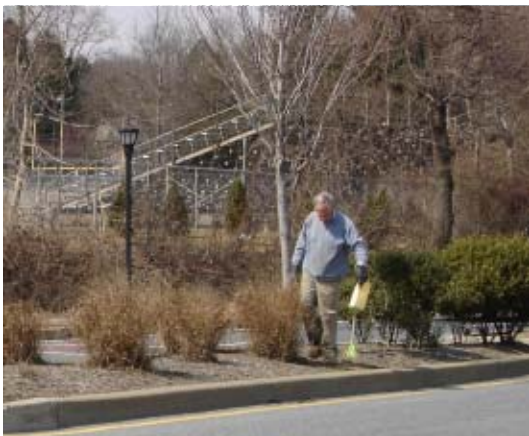
The Grape Hyacinths in the narrow median across from Powder Mill Square are attractive for a few weeks in early spring, but then have bare spots the rest of the year. We intend to replace these with more Panicum

(continued)

Landscaping (cont.)

'Shenandoah' this fall. The past hot, dry summer was not an optimum time for planting.

Maintenance. Keeping all the landscaping and trees in DelDOT medians and rights-of-way weed free and properly maintained is quite an undertaking. To accomplish this, we contract with several companies and organizations in the area. For example, on the Sunday during Memorial Day weekend when there was minimal traffic on the Pike, Delaware Lawn and Tree Company of Bear once again cleaned, weeded, and mulched the medians throughout Greenville and on Buck Road. The company accomplished all this work in one day, including disposal of innumerable cigarette butts, most which were located at the intersections.



Fred Schmidt

For more than 20 years, Fred Schmidt, F. A. Schmidt Company of Hockessin has maintained the large cloverleaf islands on the East side of the Kennett Pike at State Road 141, and the Kennett Pike medians at Berkeley and Montchanin Roads. Many KPA members are used to seeing Fred out working along the Pike early Sunday mornings. Fred can be seen above applying pre-emergent weed killer to the island across from the Greenville Post Office.

The Delaware Center for Horticulture (DCH) maintains the two large Kennett Pike medians on either side of the SR 141 overpass. Gary Schwetz, Director of Programs, and Lenny Wilson, Landscape and Facilities Manager, of the DCH provide the KPA with horticultural

expertise as well as planning for areas not yet landscaped or in need of overhaul.

DelDOT's Cooperation. Secretary of Transportation, Nathan Hayward expanded the "Enhancing Delaware Highways" program when he first took office. Currently, the EDH team, composed of Susan Barton, University of Delaware Department of Plants and Soil Sciences, Rick Darke, formerly Curator of Plants at Longwood, author, lecturer, and garden designer, and Gary Schwetz, Director of Programs at the Delaware Center for Horticulture, is working with DelDOT to clean up the hillside at the Southwest intersection of Route 52 and 141 to rid the area of undesirable, invasive plants. Brush removal and cleanup was done this spring by DelDOT's North District Maintenance division as seen below.

As some of the invasive plants are growing back, further herbicide treatment, bed preparation and seeding is necessary and will be done by DelDOT's contractor. This will be coordinated by the EDH Project Administrator, Valann Budischak. Re-landscaping with an attractive combination of warm season grasses, trees, shrubbery, and ground covers will not be finished until next spring. The overall goal is to reduce the need for mowing and improve the aesthetics of the road. Trustee Glen Barnhill has worked tirelessly for years to accomplish this clean up of an unsightly, weedy area.



The Kennett Pike Association would like to thank the Department of Transportation, and particularly Project Manager Marc Cote for installing traffic calming bulb outs during the recent roadway resurfacing between SR 141 and Greenhill Avenue. One of these bulb outs is across from A.I. Middle School and provides additional protection for students crossing the Kennett Pike and defines a shoulder for safer parking along Route 52 for visitors to the school. Three of the bulb outs are between

Montchanin Road and SR 141 on the Kennett Pike and were subsequently planted with two Red Oaks each. Pelleport has graciously maintained the southbound bulb out. The KPA maintains the two on the North side of Kennett Pike.



Thanks to Supporters. None of the landscaping and maintenance provided by the KPA would have been possible without the generous support of our members. The majority of our landscaping funds comes from their dues and contributions. We are also very grateful to our corporate sponsors:

B S A + A

The Greenville Wine and Spirit Company

MBNA

McBride, Shopa & Company, P.A.

Tom Gebrt, Morgan Stanley, Greenville

Stoltz Management of Greenville

Additionally, we want to thank Stonegates for maintaining the median nearest their entrance.

Donors Invited. The average price for purchasing, installing and mulching a tree is \$600. If you would like to donate a tree, please contact the KPA. If you would like to make a tax deductible contribution for a tree, or any other landscaping, please send your contribution to our 501-C-3 affiliate, Evergreen Plan, Inc., P.O. Box 3592, Greenville, DE 19807. A confirmation of your donation will be provided and designation of where your tree is to be planted will be given. If you have suggestions for future locations for trees or landscaping, please contact the KPA or a Landscape Committee member. The Kennett Pike Association welcomes comments and suggestions from its members on ways to further beautify the Kennett Pike, an important part of the Brandywine Valley Scenic and Historic Byway. ■

The Brandywine Valley Scenic Byway – Delaware’s 1st National Scenic Byway

On Thursday, September 22nd, Delaware’s Brandywine Valley Scenic Byway was designated Delaware’s first National Scenic Byway by the Federal Highway Administration at a ceremony in the Columbus Club at Union Station, Washington, D.C. Rick Capca, Acting Administrator of America’s Byways, spoke on behalf of U.S. Secretary of Transportation George Mineta about this fourteen year old program. The first National Byway was designated in 1996 and there are now 125 National Byways in 44 States. Twelve National Byways were designated this year in States that previously did not have one and 17 States now have two or more. In 2005 the America’s Byways Program received \$26.5 million funding and will grow to \$43 million in 2009.

Gail Van Gilder, Delaware Greenways, Sarah Willoughby, Wilmington Visitor & Convention Bureau, Tim Morgan, State of Delaware Tourism, Representative Deborah Hudson, Joe Cantalupo, DelDOT, Gary Schwetz, Delaware Center for Horticulture, Morgan Hendry, Kennett Pike Association, and Sarah Gallagher, Tanya Baker, and Olivia Kurtz from Senator Biden’s office were all on hand to receive Delaware’s plaque. In the adjacent photograph, Gail Van Gilder, Morgan Hendry and Representative Deborah Hudson hold the plaque which was presented at the ceremony in Washington, D.C.

12.5 miles long, fronts on 50% open space, and has the most historic destinations per mile of any Byway in the Nation. He challenged DelDOT and all throughout Delaware to preserve the beauty of this corridor and not change the character of this roadway, so future generations may enjoy it as well.

This National Byway designation culminates over six years of effort by local area residents, civic leaders and elected officials. After being designated the first Delaware Scenic and Historic Highway in 2002, an Advisory Committee of residents, property owners, officials, organizations and businesses, coordinated by Delaware Greenways, created a Corridor Management Plan in 2003. That plan emphasizes beautification, enhancement, and preservation of the roadway while recommend-

perspective of the landscaping along the Byway, future overall landscape design goals, and future overall management objectives. The landscape goals are in concert with those of the KPA and the KPA was an active participant in both the overall effort to create a Corridor Management Plan and the specific landscaping objectives.

The Brandywine Valley Scenic Byway is a loop that begins and ends in downtown Wilmington, made up of three sections including the City (lower SR 52 from Rodney Square to Rising Sun Lane), Kennett Pike (upper SR 52 from Rising Sun Lane to the Pennsylvania State Line), and Montchanin Road (SR 100 from Kennett Pike to the Pennsylvania State line).

Secretary Nathan Hayward III said in a DelDOT press release that preserving scenic byways is just as important for future generations as improving highways. “This took a considerable effort from many, but began with a core group of residents who dearly love the Brandywine Valley,” said Secretary Hayward. “We have been committed to this effort from day one and residents should know that DelDOT will continue to be good stewards of this important corridor.” Gail Van Gilder said “Magnificent country estates, quaint historic villages, glorious gardens, the finest collection of American antiques and the birthplace of our American industrial heritage – the whole



Gail, Morgan and Debbie in Washington, D.C.

history of America, social, economic, horticultural and art is laid out before you as you travel the rolling hills of the Brandywine Valley. Receiving the National Byway designation will insure that this journey through the renowned Brandywine Valley will remain as scenic and historic as the world class museums and gardens that dot the landscape.” ■

On Friday, September 24th, Joe Cantalupo on behalf of Secretary Nathan Hayward, presented Delaware’s plaque to Governor Ruth Ann Minner at the Delaware Museum of Natural History and Delaware’s new Byway signs were unveiled. Senator Biden, Representative Mike Castle, and State Representative Deborah Hudson spoke about this tremendous achievement. Senator Biden, who was instrumental in getting the Delaware State Scenic and Historic Highways Program started and securing Federal funding, has been one of the program’s strongest advocates ever since. The most notable qualities of this Byway include its history and culture, which are considered by many to be of national and international significance. Senator Biden said the Byway is

ing strategies to address community goals and objectives to strengthen the byway’s business and commercial areas, support stewardship of intrinsic resources and support tourism and interpretative needs.

Gail Van Gilder, Delaware Greenways, has provided the vision and leadership for this volunteer Advisory Committee and has directed a team of dedicated consultants including John Milner Associates, Lardner/Klein Landscape Architects, Delaware Center for Horticulture, and the Regional Landscape Enhancement Organization, under the direction of Rick Darke, Susan Barton and Gary Schwetz.

A Landscape Management Plan, finished in 2005 includes an inventory of historic sites, and

history of America, social, economic, horticultural and art is laid out before you as you travel the rolling hills of the Brandywine Valley. Receiving the National Byway designation will insure that this journey through the renowned Brandywine Valley will remain as scenic and historic as the world class museums and gardens that dot the landscape.” ■

Celebrate

Brandywine Valley National Scenic Byway at Delaware Greenways Annual Meeting. October 20th, 6–8pm at Delaware Museum of Natural History. Guest Speaker Kevin Fry, President, Scenic America. RSVP: 302-655-7275

Delaware News

Greenville Place Apartments. On September 15th, Pettinaro Relocation had a grand opening of the first of three planned seven story apartment buildings at the back of their Greenville Place Apartments complex. This new apartment building, named the Towers at Greenville, is intended to meet a perceived need for corporate short term furnished apartments rentals in the area. Nearby residents and the KPA were invited to see the first finished building.

The KPA and adjacent Civic Associations have long been concerned about the impact of the proposed high rise apartment buildings that had been planned and discussed for nearly ten years. Adjacent neighborhoods and the KPA have worked with the owner and New Castle County Department of Land Use in an effort to minimize the height and reduce the number of buildings that might be built. While agreement was reached on reducing the number of buildings, the KPA with the support of adjacent Civic Associations retained former Chancellor Grover Brown to file an appeal with the New Castle County Board of License, Inspection and Review seeking to block issuance of a building permit for the first seven story building. The Department of Land Use opposed this appeal and it was not granted.

On June 2nd, Mr. Bennett and Mr. Haggerty, New Castle County Department of Land Use, met with KPA Trustees to discuss drainage, open space, garages, and the height of the first seven story building constructed at Greenville Place Apartments. The Department reassured the KPA that, regardless of how open space is calculated, the Department recognized the project cannot support a third building without creating additional open space by removing other buildings or eliminating parking spaces. Construction of additional buildings has not been announced. The KPA intends to monitor any future construction carefully to assure maximum compliance with applicable regulations.

A.I. du Pont High School. Red Clay Consolidated School District replaced the school's bleachers, renovated the track, and

replaced the chain link fence at the corner of Kennett Pike and Hillside Roads this past year. With the help of Representative Deborah Hudson, funds were provided to construct a stone wall containing a sign with A.I. du Pont High School on it at the corner and to remove the utility poles from the front of the school on Hillside Road, so that they could be replaced with utility wires that are underground.

Unfortunately, a part of this work included the clearing of some landscaping along the railroad right of way and Kennett Pike and this exposed the back of the high school football field and bleachers to view from the Kennett Pike. This detracted from the improvements that had been made to the property at the corner and the KPA asked for landscaping to be re-planted.

KPA Trustee Glenn Barnhill, has worked with Richard Moretti, Program Administrator, Major Capital Improvement Program, Red Clay Consolidated School District, to restore the landscaping that was removed. Red Clay has now contracted with Brandywine Nurseries to plant six Delaware native Armstrong Maples near the back of the bleachers and they expect the vines currently on the fence to continue to grow and provide screening once again. If this is not sufficient, they have promised to plant ivy to provide the screening that was removed during the renovations.

The KPA is grateful to Mr. Moretti and Red Clay Consolidated School District for their quick response and for making this addition to their overall improvement project, to Representative Deborah Hudson for the stone wall for the high school sign and for relocating the utilities underground as well as her continued community support, and to Trustee Barnhill for his work in accomplishing these improvements.

Centreville Hometown Overlay Steering Committee. Last year, the Centreville Civic Association and New Castle County Department of Land Use revealed proposed plans for a Hometown Overlay District for Centreville. Hometown Overlay Districts are designed to allow older towns and villages to impose

another layer of zoning to protect their unique character and give the local community greater input on future changes. Evidently, the plan initially proposed for Centreville included some controversial elements and was criticized for lacking broad community consensus. A new committee has been formed on which The KPA is represented. It should be emphasized that this committee's mission and power does not include determining how DelDOT will resolve traffic issues involving the Kennett Pike where it passes through Centreville. However, DelDOT's decision will undoubtedly impact any future plan to create a Centreville Hometown Overlay District. The KPA will keep its members informed of pertinent developments in future newsletters. ■

Pennsylvania News

Scenic Byway Status. Pennsbury and Kennett Townships continue to seek Scenic Byway status for the Kennett Pike in Pennsylvania. Designation will protect the intrinsic natural, cultural and historic resources along Kennett Pike and will connect with Delaware's Brandywine Valley Scenic Byway at both SR 52 and SR 100. The goal is to connect the byways in both States and then seek National Byway status for the Pennsylvania portions of Kennett Pike and Rt. 100. The KPA is committed to supporting this effort.

Pennsbury Town Center. In September 2004 the Supervisors of Pennsbury Township approved a project to develop 27 acres, including Pennsbury Town Hall, in a project to consist of 154 units with a mixture of residential, rental apartments, townhouses, traditional neighborhoods, etc. A group calling themselves the Defenders of Pennsbury Township filed suit shortly thereafter to prevent use of Township property for the proposed project. This month, one year later, the petition by Pennsbury Township to use Township property for the development was denied by a Pennsylvania judge. He ruled that the project to develop the Township land was not for a public purpose as stated in the deed for the land. ■

The Kennett Pike Association, Inc.

45th Annual Meeting

PLEASE COME!

Topics to be Discussed

- Kennett Pike Association, Inc., Reports on Landscaping, Zoning and Roadway Issues
- Brandywine Conservancy, Inc., Saving the King Ranch in Unionville, PA.
- Centreville Hometown Overlay Steering Committee and its work on Zoning Issues in Centreville
- Questions & Answers with Elected Officials
- Other KPA Annual Business

**Monday
October 17th
7:00pm – 9:30pm**

Lower Brandywine Church Auditorium
(between Kennett Pike and Old Kennett Road,
across from Winterthur's main entrance)

Guest Speakers:

Wendell Fenton, Trustee,
Brandywine Conservancy, Inc.

Mary Grace Fariello, Department
of Land Use, New Castle County

Warren Scott and **Brenda Boucher**,
Co-Chairpersons for the Centreville
Hometown Overlay Steering
Committee

KPA Trustees – Committee reports

Membership in the KPA

The Kennett Pike Association, Inc. was formed in 1957 and incorporated in 1961 to assure the orderly development, preservation of values and beauty indigenous to northern Christiana Hundred between the Brandywine River and Red Clay Creek, and areas adjacent to Rt. 52 from the Delaware State line to Rt. 1 near Longwood, Pennsylvania. Governed by a volunteer Board of Trustees elected by the members for four year terms and headed by

Officers elected for two years, the Association strives to represent views of Members who have homes and businesses in this area. The KPA maintains close liaison with elected officials and various agencies throughout New Castle County, Kennett Township, and Pennsbury Township. The KPA monitors zoning changes, variances and proposed legislation in an effort to keep constituents aware of changes in the area. There are 38

Civic Associations within the KPA geographical area and many periodically ask the KPA to support them in solving issues facing their individual communities.

If you are not a member please complete and mail the card below to the KPA. If you know someone who would like to join the KPA, please share this newsletter with them or contact the KPA office and we would be pleased to send them a copy as well. ■

how can you help?

If we are to continue, we need the benefit of your ideas and suggestions, as well as your financial support. We invite you to join us, or renew your membership. The dues schedule is below.

Individual Membership \$40
Family Membership \$50
Civic Association/Business \$125
Corporate Sponsor \$250

Additional contributions are welcome.

Note: Dues to K.P.A. are not tax deductible as we must occasionally take political action and lobby for or against legislation.

renew or become a member!

I/We would like to renew my/our membership.

I/We would like to become a new member of the K.P.A.

Name(s): _____

Address: _____

Phone: _____ Check is attached for \$ _____

Signed _____

Date _____

Please return to:

The Kennett Pike Association, Inc.
P.O. Box 3592, Greenville, DE 19807



THE KENNETT PIKE ASSOCIATION, INC.

302-655-6505 Box 3592 Greenville, Delaware 19807

Annual Meeting/Town Meeting

The 2005 Annual Meeting of the Kennett Pike Association, Inc. will be held on Monday, October 17th, from 7:00 to 9:30 pm at Lower Brandywine Church. In keeping with past practice, this meeting will be open to the public and we encourage area residents to attend.

At this year's KPA Annual Meeting, we will continue to focus on zoning, development,

and land preservation. We have invited Mary Grace Fariello, New Castle County Department of Land Use, Warren Scott and Brenda Boucher, Co-Chairpersons of the Centreville Hometown Overlay Steering Committee, to summarize what has been discussed since the Committee was formed, give a brief overview of the purpose and objectives of the Committee and what the goals are for the future.

We have also invited Wendell Fenton, Trustee, Brandywine Conservancy, Inc. to speak about land conservation in the Brandywine Valley and specifically about saving the King Ranch in Unionville, Pennsylvania.

Elected officials will be invited to say a few words and answer questions. The Annual business of the KPA will be conducted, including election of Trustees and Reports by heads of the various KPA Committees.

Last December, the 2004 KPA Annual Meeting was also held at Lower Brandywine Church and the focus was on water resources in the Brandywine Valley. Gail Van Gilder, Director of Public Affairs for Delaware Greenways, Mr. Tom Cahill, an environmental engineer with West Chester based Cahill Associates, and Mr. Bob Struble,

Executive Director of the Brandywine Valley Association (a group that has studied the environmental health of the Valley for the past fifty years) all spoke about the importance of storm and wastewater management, and water recharge for the Brandywine Valley. Development throughout the Brandywine Valley, the extent of impervious surfaces, and septic systems versus sewer for waste water management were discussed. ■

KPA Trustees

Each KPA Trustee is elected by our members to a four-year term at a KPA annual meeting, is appointed by the Board to complete an unfinished term of someone who retires, or is appointed by the Board for an interim term until the next annual meeting. The following is a list of KPA Trustees and the year their term expires.

- Mrs. Joanne Babr/2006 – Vice President*
- Mr. Glenn Barnhill/2006*
- Mr. Richard Beck/2005*
- Mrs. Susan Casscells/2005*
- Mr. Robert Crandell/2007*
- Mr. F. Hamilton Fish, Jr. – Dir Emeritus*
- Dr. Mark Fortunato/2007 – Treasurer*
- Mr. Morgan Hendry/2008 – President*
- Mrs. Patricia Hobbs/2008*
- Mrs. Christine Homer/2005*
- Mrs. Ellie Maroney/2008 – Secretary*
- Mrs. Beth Moore/2006*
- Mr. Buck Simpsters/2007*
- Mrs. Wendie Stabler/2008*
- Mr. Maynard Turk/2007*

*An Evening
with the
Artists*

Saturday, October 8, 2005
6 to 9 o'clock p.m.

The Fentons' historic Chester County barn
4525 South Creek Road (Old Route 100)
Pennsbury Township

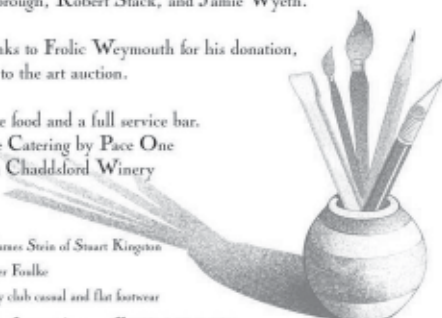
Meet some of the artists who have made the Brandywine Valley famous.

See them create unique works of art for the evening's auction
to benefit Pennsbury Land Trust initiatives.

Contributing artists include Richard Bollinger, Margaretta Brokaw,
Mary Page Evans, Karl Kuserner, Anna B. McCoy, Anne Oldach,
Paul Scarborough, Robert Stack, and Jamie Wyeth.

Special thanks to Frolic Weymouth for his donation,
in absentia, to the art auction.

Enjoy festive food and a full service bar.
Brandywine Catering by Pace One
Wines from Chaddsford Winery



Auctioneer: James Swin of Stuart Kingston
Music: Walter Foulke
Dress: country club casual and flat footwear

For more information, call 610-388-7401